

CAT[®] PHONES |



CAT[®] S62 Pro



BULLITT

AVANCES Y MEJORAS EXCLUSIVAS DE LA IMAGEN TÉRMICA



LA MEJOR CÁMARA TÉRMICA PARA SMARTPHONE

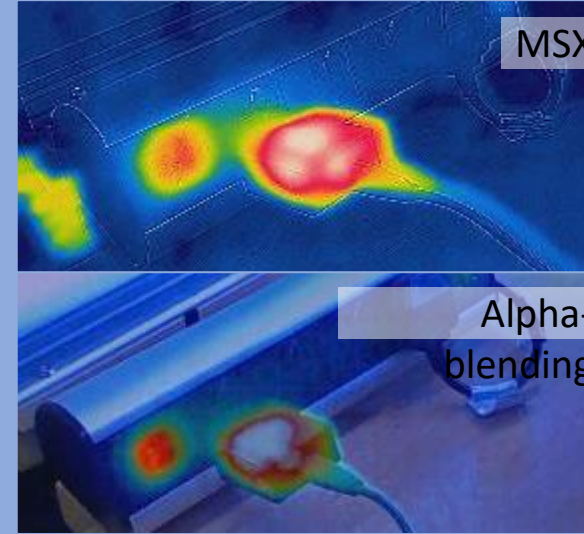
Lente térmico profesional FLIR
Leptón 3.5
Rango de temperatura medible:
-20 ° C a 400 ° C
Precisión típica: ± 5 ° C
Distancia medible: ~ 20 m
Protección totalmente resistente



TÉRMICO SUPERIOR CALIDAD DE LA IMAGEN

Imagen térmica de la mejor calidad

- Captura HD de 1440 x 1080, mejorada con VividIR™
- 4 veces mejor resolución que el Cat S61:
- 160x120 (tamaño de píxel de 12 μ m)



HERRAMIENTAS PARA CONTEXTUALIZAR IMÁGENES

- Capa lineal MSX™ con intensidad variable
- Mezcla alfa de imagen visual y térmica



CAPTURA TÉRMICA PROFESIONAL

- Punto de medición móviles
- Captura de áreas de interés
 - Imágenes Isotermiales y rangos de visualización de temperatura fija/
 - Monitoreo en vivo, captura de imágenes fijas, video y lapso de tiempo
 - 9 paletas de colores
 - Informes en PDF **BULLITT**

CAT® S62 PRO – ESPECIFICACIONES Y CREDENCIALES ROBUSTAS



IMAGENS TERMICAS

- Integrated FLIR thermal camera
- Lepton 3.5 professional grade camera
- 1440x1080 HD output with VividIR
- MSX linear overlay from visual cam
- measurable range: -20°C to 400°C



DIMENSIONES

158.5 x 76.7 x 11.9mm, 230g



BATERIA

4,000mAh



OS

Android 10 (with upgrade to 11)



CAMARA

- 12MP Sony dual pixel rear camera
- 8MP front camera



PANTALLA

- 5.7" FHD+ 18:9 display
- Protected by Gorilla Glass 6
- Use with gloves or wet fingers



CAT® S62 Pro



ROBUSTES

- Drop tested 30x to 1.8M on steel
- Military Spec (MIL SPEC 810G)
- Water/Dust proof, washable (IP68)
- with 2-year warranty



PROCESADOR Y MEMORIA

- Qualcomm Snapdragon 660
- 2.0GHz octa-core processor
- 6GB RAM, 128GB ROM, microSD™



CONECTIVIDAD

- 4G LTE CAT 13, VoLTE, VoWiFi, ViLTE
- [bands:1/2/3/4/5/7/8/20/28/38/40]
- Wi-Fi 2.4/5GHz (A/B/G/N/AC)
- Bluetooth 5.0, NFC
- USB type C



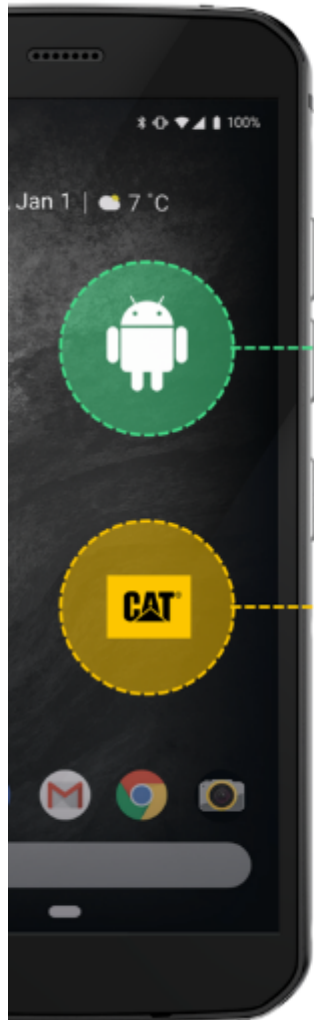
APLICACIONES EMPRESARIALES.

- Android Enterprise Recommended
- 90-day security patches for 3 years
- AE support, Zero-touch compatible



HERRAMIENTAS LISTAS PARA EL SEGMENTO EMPRESARIAL

CAT® PHONES



android
enterprise

Android Enterprise offers an EMM-enabled toolset that allows devices to be secured, managed and controlled for business use.

Powerful Enterprise Security, Built In



Google Play Protect

Always-on app analysis, scanning and removal.



Management APIs

EMM enforced policy controls.



OS Platform

Hardened platform security ensures device and data integrity.



Hardware

Dedicated secure hardware elements carry out the most critical tasks.

Android Version Upgrade

Cat phones receive an Android version update during their lifetime

Comprehensive And Innovative Management



Flexible Management For Company-Owned Devices

Work only: full device management

Personally enabled: one device, for personal and business use

Dedicated: deploy dedicated devices for a specific purpose



A Range of EMM Deployment And Enrolment Options

Zero-touch, EMM token, QR code, NFC

Features Enabled By Leading EMM Solutions

vmware®

IBM MaaS360

With
Watson

SOTI.

mobileiron

Enterprise-Ready Cat Phones



Full Android Enterprise Support

AE Test Suite passed, and enrolments tested



Regular Security Updates

90-day security maintenance releases for at least two years